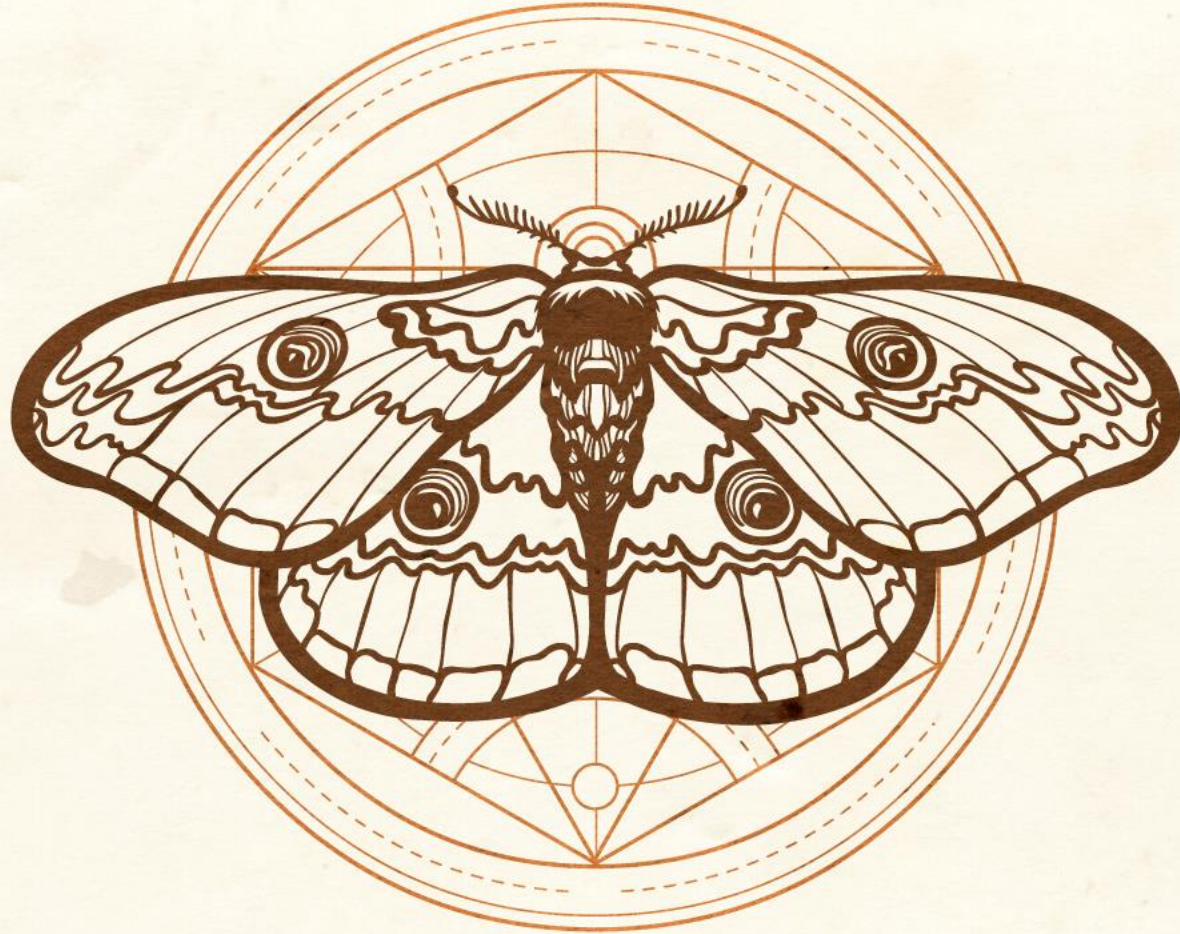


# TRANSFORMED!



**WE DO NOT LOSE HEART. THOUGH OUTWARDLY WE ARE WASTING AWAY,  
YET INWARDLY WE ARE BEING RENEWED DAY BY DAY.**

**II CORINTHIANS 4:16**









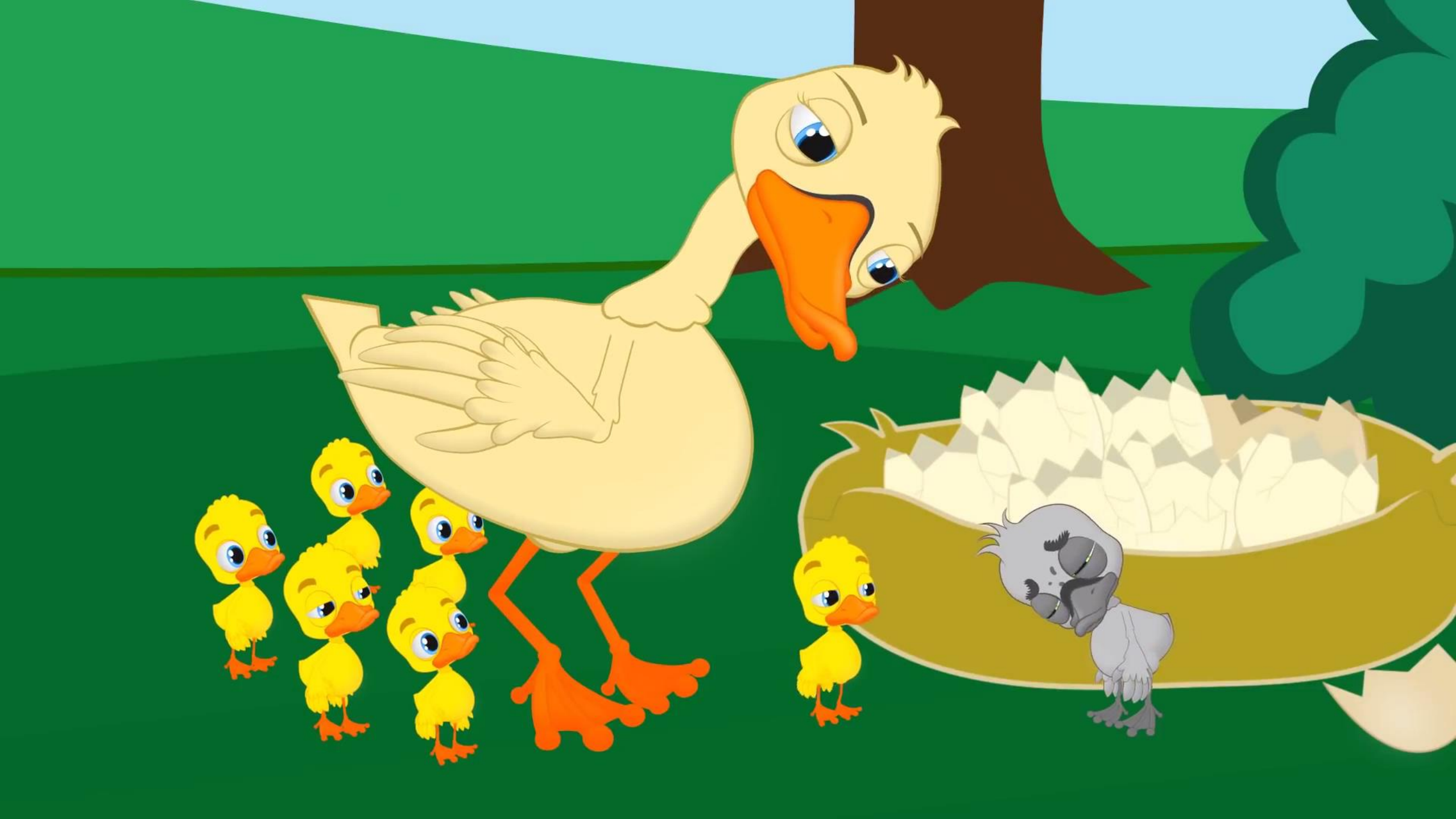
















**LET GOD TRANSFORM YOU INTO  
A NEW PERSON BY CHANGING  
THE WAY YOU THINK.**

**ROMANS 12:2**





**GAME**  **TIME**



**BELIEVE**  
**BEHAVE**  
**BECOME**





# JUDGES

6: 1-6 // 11-16



**BELIEVE**

**PICK A NEW LABEL**

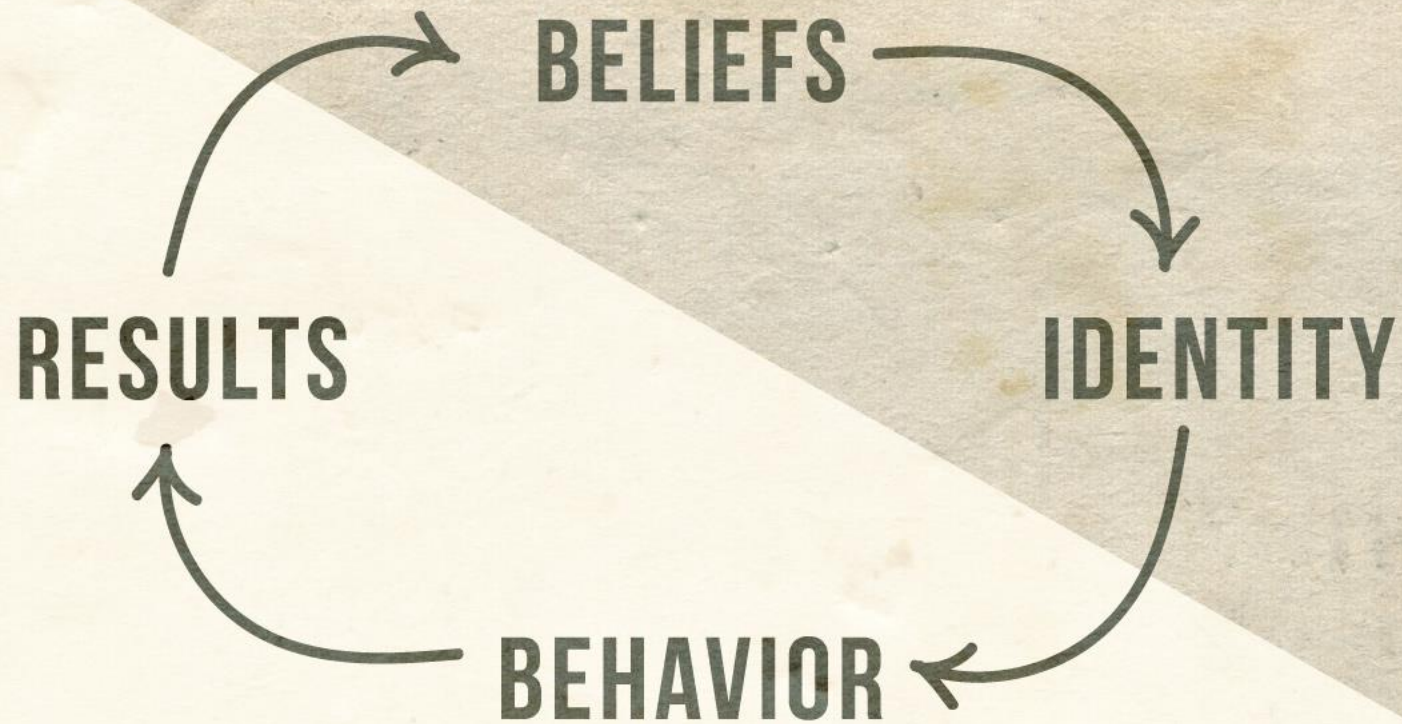




- // **ABRAM**
- // **SARAI**
- // **HOSHEA**
- // **SIMON**
- // **DISCIPLES**
- // **SAUL**
- // **CORINTHIANS**



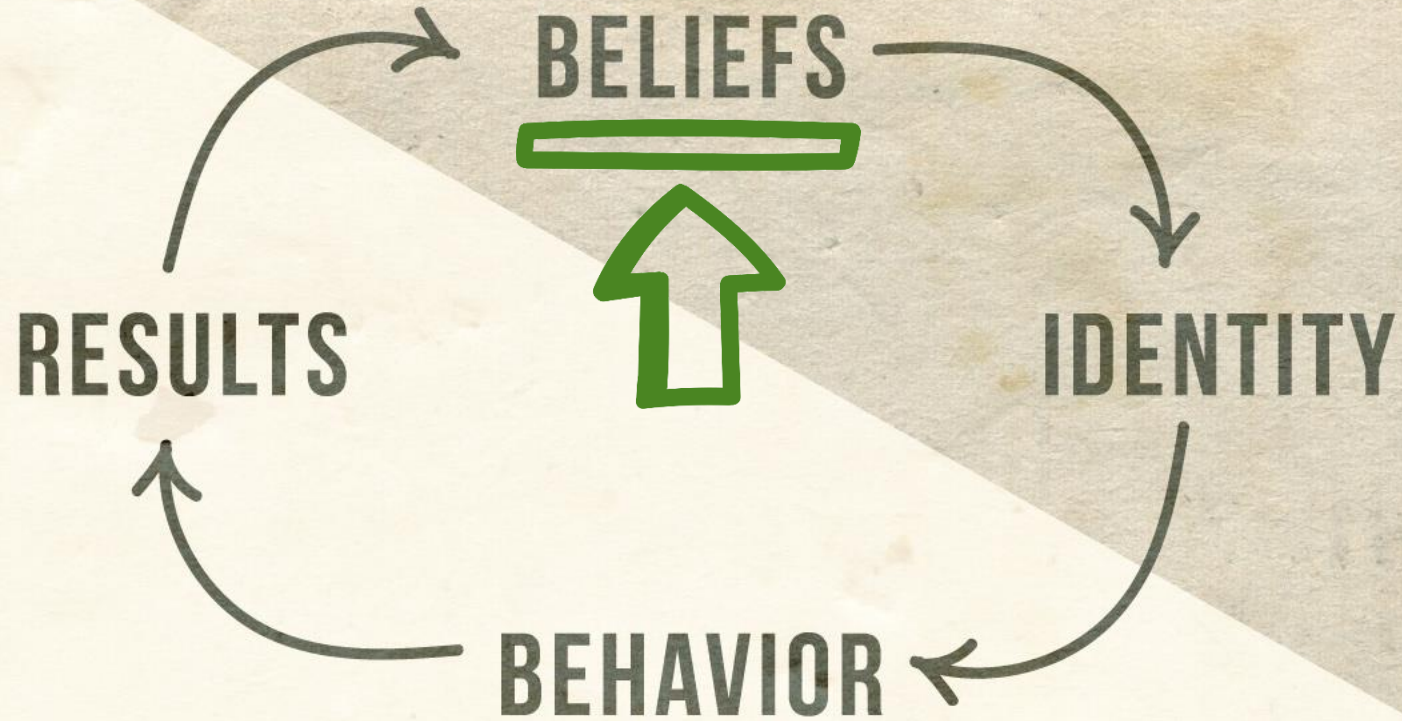
**PHASE I:  
INWARD CHANGE**



**PHASE II:  
OUTWARD CHANGE**



**PHASE I:  
INWARD CHANGE**



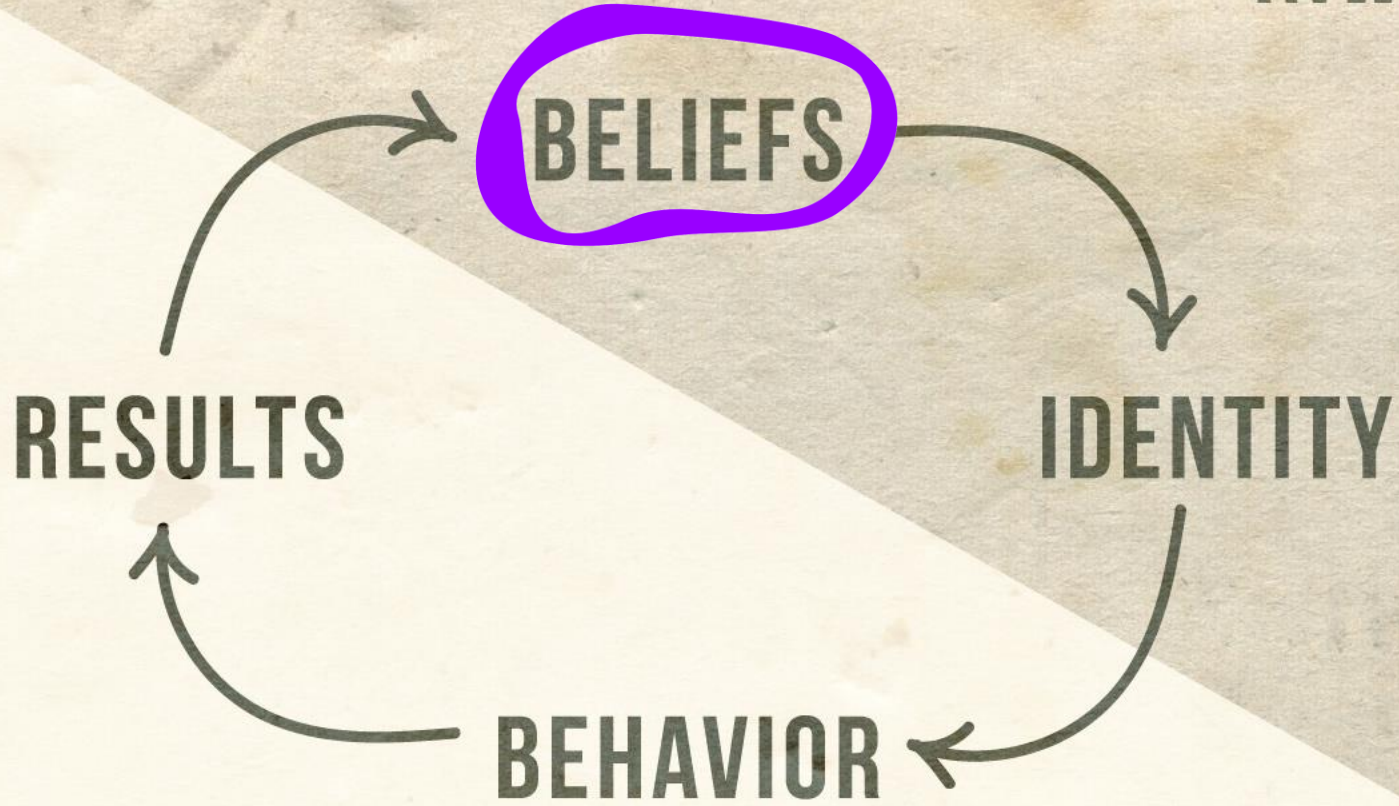
**PHASE II:  
OUTWARD CHANGE**

**\*EVIDENCE**



**ROMANS 4:18-21**

**PHASE I:  
INWARD CHANGE**



**PHASE II:  
OUTWARD CHANGE**





**YOUR ACTIONS**

**YOUR WORLD**



# GIDEON VIDEO





**BELIEVE**  
**BEHAVE**  
**BECOME**



# JUDGES

6:25-28 // 33-35





**BEHAVE**

**PICK A NEW FIGHT**

